

Phycological Research

Volume 63 • Issue 4 • October 2015

- Ekkachai Yana and Shigeki Mayama
Two new taxa of Achnantheidium and Encyonema (Bacillariophyceae) from the Yom River, Thailand, with special reference to the areolae occlusions implying ontogenetic relationship 239
- F. Hoe Chang
Cell morphology and life history of Dictyochoa octonaria (Dictyochophyceae, Ochrophyta) from Wellington Harbour, New Zealand 253
- Guangyu Chi, Bin Huang, Jian Ma, Yi Shi and Xin Chen
Effects of iron on growth and reflectance spectrum of the bloom-forming cyanobacterium Microcystis viridis 265
- Ankita Kumari, Akhilendra K. Pathak and Chandan Guria
Effect of light emitting diodes on the cultivation of Spirulina platensis using NPK-10:26:26 complex fertilizer 274
- Shinichi Miyamura, Tamotsu Nagumo, Miyuki Maegawa and Terumitsu Hori
Rearrangement of the flagellar apparatuses and eyespots of isogametes during the fertilization of the marine green alga, Monostroma nitidum (Ulvothamniophyceae, Chlorophyta) 284
- Narongrit Muangmai, Maren Preuss and Giuseppe C. Zuccarello
Comparative physiological studies on the growth of cryptic species of Bostrychia intricata (Rhodomelaceae, Rhodophyta) in various salinity and temperature conditions 300
- Gregory N. Nishihara, Chizuru Yamada, Ryutaro Kimura and Ryuta Terada
Under slow flow conditions, daily rates of canopy photosynthesis of marine macrophytes were insensitive to model choice and flow-rate 307

Phycological Research

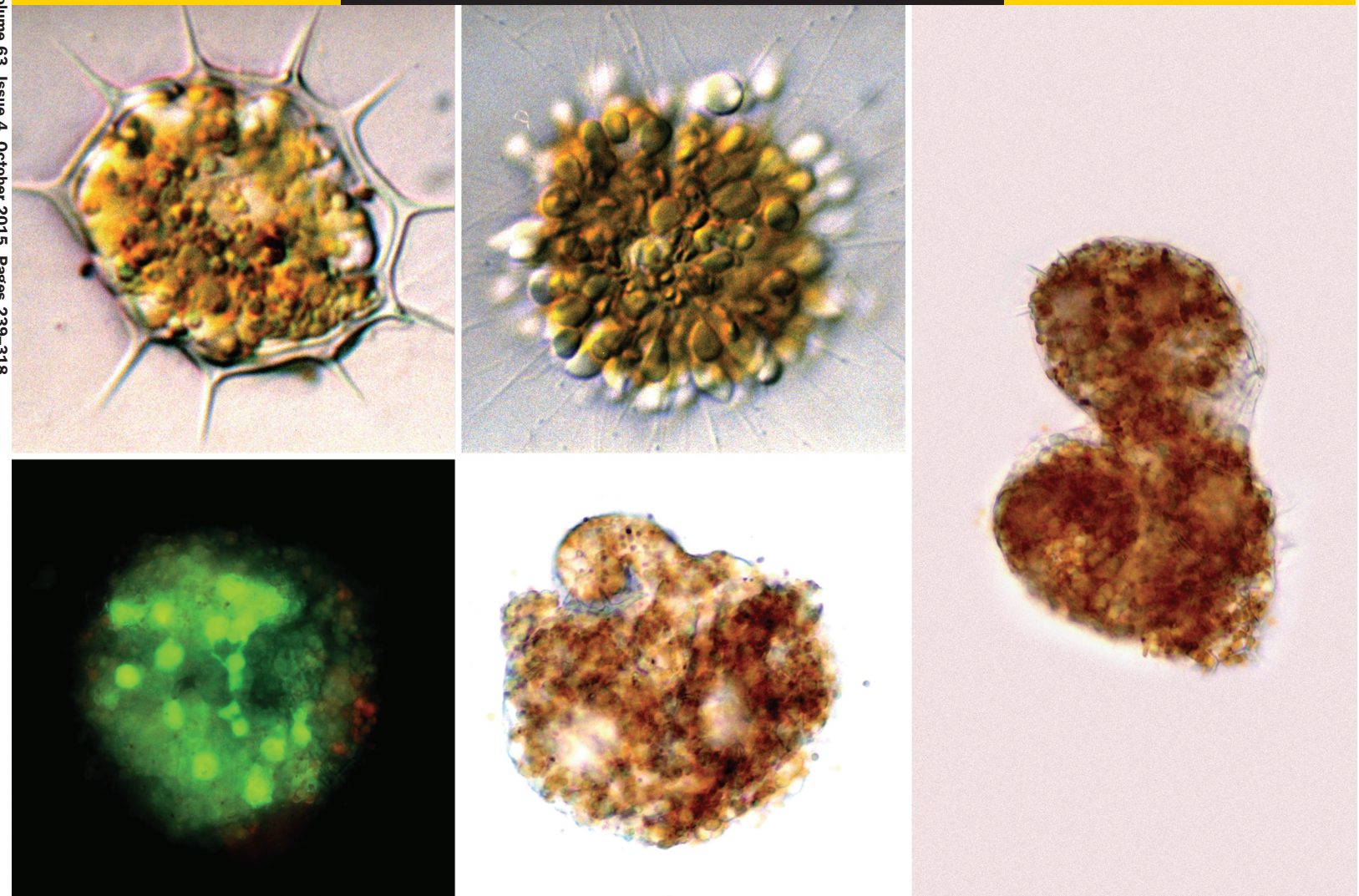
Volume 63 • Issue 4 • October 2015

ISSN 1322-0829

Phycological Research

Volume 63, Issue 4, October 2015, Pages 239-318

WILEY



WILEY

The Japanese Society of Phycology

Phycological Research

EDITOR-IN-CHIEF

Mitsunobu Kamiya

Faculty of Marine Bioscience, Fukui Prefectural University, Fukui, Japan

ASSOCIATE EDITORS

Jaanika Blomster
Dept. of Environmental
Sciences, University of
Helsinki, Finland

Niels Daugbjerg
Department of Biology,
University of
Copenhagen, Denmark

Daisuke Honda
Department of Biology,
Faculty of Science and
Engineering, Konan
University, Japan

Mitsunori Iwataki
Asian Natural
Environmental Science
Center, University of
Tokyo, Japan

Regine Jahn
Botanic Garden and
Botanical Museum
Berlin-Dahlem, Freie
Universität Berlin,
Germany

Ulf Karsten
Institute of Biological
Sciences, University of
Rostock, Germany

Christos Katsaros
Department of Botany,
Faculty of Biology,
University of Athens,
Greece

Masanobu Kawachi
Environmental Biology
Division, National
Institute for
Environmental Studies,
Japan

Jeong Ha Kim
Department of
Biological Sciences,
Sungkyunkwan
University, Korea

Tatyana A. Klochkova
Department of Biology,
Kongju National
University, Korea

Showe-Mei Lin
Institute of Marine
Biology, National
Taiwan Ocean
University, Taiwan

Ichiro Mine
Graduate School of
Kuroshio Science,
Kochi University, Japan

Rei Narikawa
Department of Biological
Science, Shizuoka
University, Japan

Wendy Nelson
National Institute of
Water & Atmospheric
Research & SBS,
University of Auckland,
New Zealand

Gregory N. Nishihara
Institute of East China
Sea Research,
Nagasaki University,
Japan

Tatsufumi Okino
Faculty of Environmental
Earth Science,
Hokkaido University,
Japan

Hiroyuki Sekimoto
Department of Chemical
and Biological Sciences,
Faculty of Science,
Japan Women's
University, Japan

Kensuke Toyoda
Department of Biology,
Keio University, Japan

John A. West
School of Botany,
University of
Melbourne, Australia

Giuseppe C. Zuccarello
School of Biological
Sciences, University of
Wellington, New
Zealand

EDITORIAL SECRETARY

Shinya Sato

Faculty of Marine Bioscience, Fukui Prefectural University, Fukui, Japan

This journal is available online at *Wiley Online Library*. Visit wileyonlinelibrary.com to search the articles and register for table of contents email alerts.

Access to this journal is available free online within institutions in the developing world through the AGORA initiative with the FAO and the OARE initiative with UNEP. For information, visit www.aginternetwork.org, www.oaresciences.org.

AIMS AND SCOPE *Phycological Research* is published by the Japanese Society of Phycology and complements the *Japanese Journal of Phycology*. The Journal publishes international, peer-reviewed research dealing with all aspects of phycology to facilitate the international exchange of results. All articles are peer-reviewed by at least two researchers expert in the field of the submitted paper. *Phycological Research* has been credited by the International Association for Plant Taxonomy for the purpose of registration of new non-vascular plant names (including fossils). For further information see <http://bgbm3.bgbm.fu-berlin.de/iapt/registration/journals/htm>.

ABSTRACTING AND INDEXING SERVICES The Journal is indexed by Aquatic Sciences & Fisheries Abstracts, BIOBASE, Biological Abstracts, BIOSIS Previews, Biotechnology & Bioengineering Abstracts, Cambridge Scientific Abstracts, Chemical Abstracts Service, Current Awareness in Biological Sciences, Current Contents, Ecological Abstracts, EMBASE/Excerpta Medica, Environmental Sciences and Pollution Management, GEOBASE, Irrigation and Drainage Abstracts, Microbiology Abstracts, Oceanic Abstracts, Pollution Abstracts, ProQuest (previously University Microfilms), Referativnyi Zhurnal, Science Citation Index (ISI), Soils and Fertilizers, Weed Abstracts, Zoological Record, National Inquiry Services Centre (NISC).

THE JAPANESE SOCIETY OF PHYCOLOGY We invite anyone who is interested in any aspect of phycology to become a member of the Society. As a member you will receive *Phycological Research* and the *Japanese Journal of Phycology* free of charge. The annual membership fee for individuals ¥8000. Members who reside outside Japan will receive only the English language journal *Phycological Research* and the annual membership fee is ¥7000 (standard), ¥5000 (student).

Note to NIH Grantees

Pursuant to NIH mandate, Wiley Blackwell will post the accepted version of contributions authored by NIH grant-holders to PubMed Central upon acceptance. This accepted version will be made publicly available 12 months after publication. For further information, see www.wiley.com/go/nihmandate.

For submission instructions, subscription and all other information visit <http://wileyonlinelibrary.com/journal/pre>

ISSN 1322-0829 (Print) ISSN 1440-1835 (Online)

PRE.JEB.Oct15

Those who wish to join the Society should send the application form (at the back of each issue of the Journal), together with payment, to the Membership Secretary, at the address given on the form. Members who wish to claim for missing or damaged issues should contact the Membership Secretary.

ADDRESS FOR EDITORIAL CORRESPONDENCE Mitsunobu Kamiya, Faculty of Marine Bioscience, Fukui Prefectural University, 1-1 Gakuencho, Obama, Fukui 917-0003, Japan (E-mail: mkamiya@fpu.ac.jp).

DISCLAIMER The Publisher, Japanese Society of Phycology and Editors cannot be held responsible for errors or any consequences arising from the use of information contained in this journal; the views and opinions expressed do not necessarily reflect those of the Publisher, Japanese Society of Phycology and Editors, neither does the publication of advertisements constitute any endorsement by the Publisher, Japanese Society of Phycology and Editors of the products advertised.

Copyright © 2015 Japanese Society of Phycology.

Cover Various forms of *Dictyocha octonaria* (Photos by F. H. Chang). Left top row: Skeleton-bearing form at uninucleate stage. Middle: Mucocyst-bearing form at uninucleate stage (described herein as a new morphotype). Left bottom row: A large multinucleate cell photographed using epifluorescence microscopy. Middle: A multinucleate cell with newly formed daughter cells. Right: Three multinucleate cells fused to form a large plasmodium-like aggregate. See F. H. Chang in this issue for details.

The Japanese Society of Phycology

Officers for 2015–2016

President: Jiro Tanaka *Tokyo University of Marine Science and Technology, Japan*
Secretary: Hidekazu Suzuki *Tokyo University of Marine Science and Technology, Japan*
Treasurer: Takanori Matsuoka *Nippon Dental University, Tokyo, Japan*

Membership Secretary: Satoko Sekida *Kochi University, Japan*; Shin-ichiro Abe *Ibaraki University, Japan*
Public Relations Secretary: Takashi Nakada *Keio University, Japan*
Secretary for International Affairs: Shin-ichiro Abe *Ibaraki University, Japan*

Members of Executive Council 2015–2016

Sung Min Boo *Chungnam National University, Korea*
Daisuke Fujita *Tokyo University of Marine Science and Technology, Japan*
Masahiko Idei *Bunkyo University, Japan*
Masanobu Kawachi *National Institute for Environmental Studies, Japan*
Shigeo Kawaguchi *Kyushu University, Japan*
Hiroshi Kawai *Kobe University, Japan*
Akira Kurashima *Mie University, Japan*
Ichiro Mine *Kochi University, Japan*
Shinichi Miyamura *University of Tsukuba, Japan*
Hideaki Miyashita *Kyoto University, Japan*
Taizo Motomura *Hokkaido University, Japan*

Daisuke Muraoka *Tohoku National Fisheries Research Institute, Japan*
Tamotsu Nagumo *The Nippon Dental University, Japan*
Takeshi Nakayama *University of Tsukuba, Japan*
Wendy A. Nelson *The National Institute of Water and Atmospheric Research, New Zealand*
Shuji Ohtani *Shimane University, Japan*
Yoshihiko Sakanishi *Japan Sea National Fisheries Research Institute, Japan*
Ryuta Terada *Kagoshima University, Japan*
Giuseppe C. Zuccarello *Victoria University of Wellington, New Zealand*

JOIN THE JAPANESE SOCIETY OF PHYCOLOGY AND RECEIVE FOUR ISSUES OF PHYCOLOGICAL RESEARCH PER YEAR FREE OF CHARGE

The Japanese Society of Phycology, founded in 1952, currently has 685 members (including 68 overseas members). The Society is open to anyone who is interested in pure or applied aspects of phycology.

Application for membership

(Please type or write in block letters) Membership starts from 2014

Name in full: _____, _____
(Family name) (Given name and initials)

Mailing address: _____
_____ (Postal code) (Country)

Telephone: _____ Fax: _____

E-mail: _____ Interests: _____

Signature: _____ Date: _____

**The annual fee for individual members is ¥8000
(¥7000 for members who reside outside Japan, ¥5000 for students who submit a verifying statement signed by their Chairperson or Head of Department)**

Payment by: Visa MasterCard American Express

Card number: _____ - _____ - _____ - _____ Expiry date: _____

Signature: _____

International postal money order

Send application form to: Shin-ichiro ABE
College of Education,
Ibaraki University,
2-1-1, Bunkyo, Mito,
Ibaraki 310-8512, Japan
PHONE & FAX: +81-29-228-8446
Email: shinabe@mx.ibaraki.ac.jp